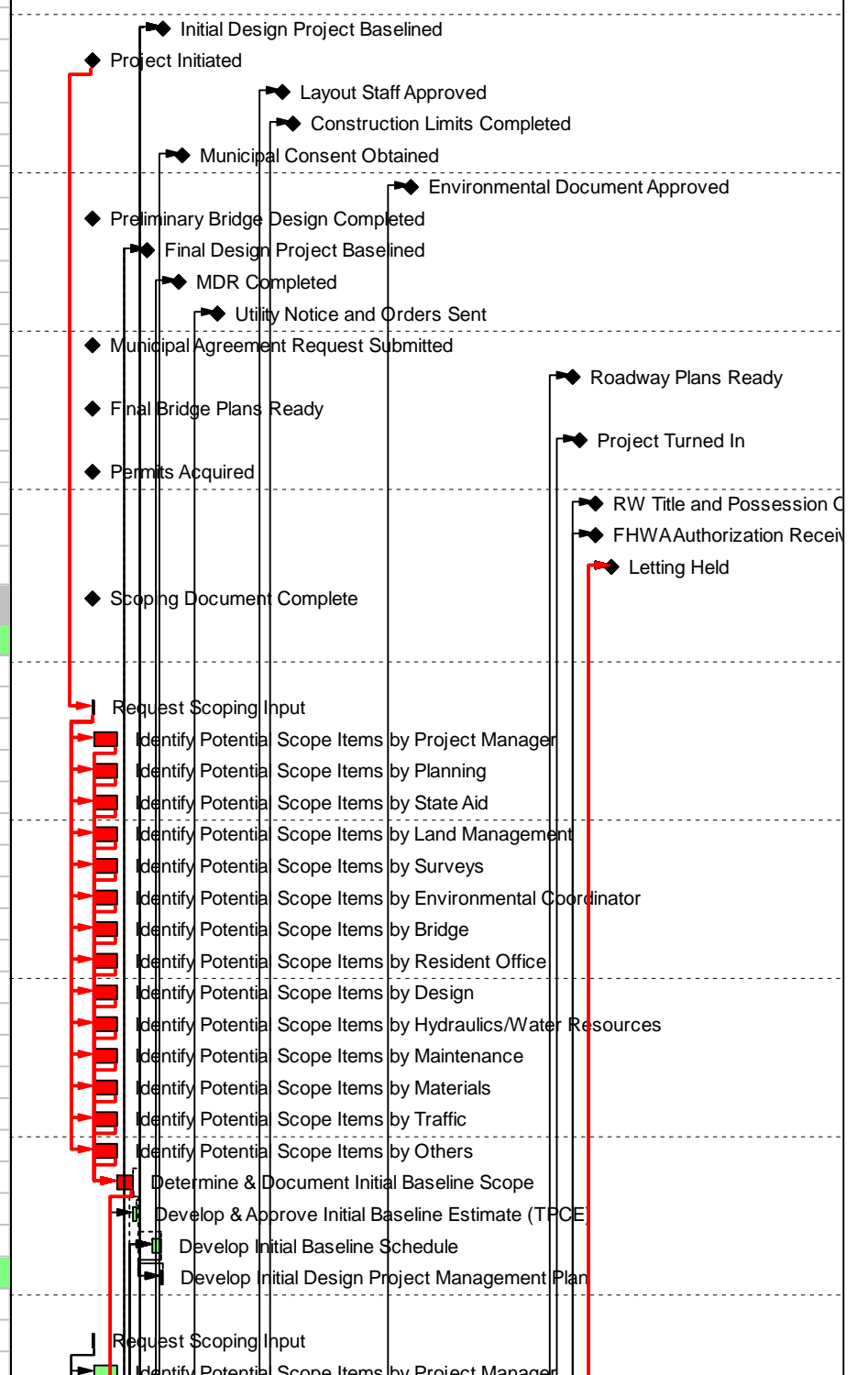


#	Activity ID	Activity Name	Owner	Original Duration	Remaining Duration	Physical % Complete	Early Start (A=Actual)	Early Finish (A=Actual)	Late Finish	Total Float	Timeline												
											2013	2014	2015	2016	2017	2018	2019						
539	Major Construction Project Template (with EA) (Version 20140115)																						
540	Milestones																						
541	MS_110	Initial Design Project Baseline		0	0	0%		6/19/2014	10/31/2017	846													
542	MS_100	Project Initiated		0	0	0%	12/6/2013			0													
543	MS_120	Layout Staff Approved		0	0	0%		5/14/2015	10/31/2017	621													
544	MS_130	Construction Limits Completed		0	0	0%		6/12/2015	10/31/2017	601													
545	MS_140	Municipal Consent Obtained		0	0	0%		8/8/2014	10/31/2017	811													
546	MS_150	Environmental Document Approved		0	0	0%		4/29/2016	10/31/2017	379													
547	MS_160	Preliminary Bridge Design Completed		0	0	0%		12/6/2013	10/31/2017	981													
548	MS_170	Final Design Project Baseline		0	0	0%		5/7/2014	10/31/2017	876													
549	MS_180	MDR Completed		0	0	0%		8/1/2014	10/31/2017	816													
550	MS_190	Utility Notice and Orders Sent		0	0	0%		11/14/2014	10/31/2017	743													
551	MS_200	Municipal Agreement Request Submitted		0	0	0%		12/6/2013	10/31/2017	981													
552	MS_210	Roadway Plans Ready		0	0	0%		7/18/2017	10/31/2017	74													
553	MS_220	Final Bridge Plans Ready		0	0	0%		12/6/2013	10/31/2017	981													
554	MS_230	Project Turned In		0	0	0%		8/7/2017	10/31/2017	60													
555	MS_240	Permits Acquired		0	0	0%		12/6/2013	10/31/2017	981													
556	MS_250	RW Title and Possession Obtained		0	0	0%		9/21/2017	10/31/2017	28													
557	MS_260	FHWA Authorization Received		0	0	0%		9/19/2017	10/31/2017	30													
558	MS_270	Letting Held		0	0	0%	11/1/2017			0													
559	MS_164	Scoping Document Complete		0	0	0%		12/6/2013	10/31/2017	981													
560	Project Management																						
561	Initial Design Project Baseline																						
562	IDB1000	Request Scoping Input		5	5	0%	12/6/2013	12/12/2013	12/12/2013	0													
563	IDB1010	Identify Potential Scope Items by Project Manager		40	40	0%	12/13/2013	2/11/2014	2/11/2014	0													
564	IDB1020	Identify Potential Scope Items by Planning		40	40	0%	12/13/2013	2/11/2014	2/11/2014	0													
565	IDB1030	Identify Potential Scope Items by State Aid		40	40	0%	12/13/2013	2/11/2014	2/11/2014	0													
566	IDB1040	Identify Potential Scope Items by Land Management		40	40	0%	12/13/2013	2/11/2014	2/11/2014	0													
567	IDB1050	Identify Potential Scope Items by Surveys		40	40	0%	12/13/2013	2/11/2014	2/11/2014	0													
568	IDB1060	Identify Potential Scope Items by Environmental Coordinator		40	40	0%	12/13/2013	2/11/2014	2/11/2014	0													
569	IDB1070	Identify Potential Scope Items by Bridge		40	40	0%	12/13/2013	2/11/2014	2/11/2014	0													
570	IDB1080	Identify Potential Scope Items by Resident Office		40	40	0%	12/13/2013	2/11/2014	2/11/2014	0													
571	IDB1090	Identify Potential Scope Items by Design		40	40	0%	12/13/2013	2/11/2014	2/11/2014	0													
572	IDB1100	Identify Potential Scope Items by Hydraulics/Water Resources		40	40	0%	12/13/2013	2/11/2014	2/11/2014	0													
573	IDB1110	Identify Potential Scope Items by Maintenance		40	40	0%	12/13/2013	2/11/2014	2/11/2014	0													
574	IDB1120	Identify Potential Scope Items by Materials		40	40	0%	12/13/2013	2/11/2014	2/11/2014	0													
575	IDB1130	Identify Potential Scope Items by Traffic		40	40	0%	12/13/2013	2/11/2014	2/11/2014	0													
576	IDB1140	Identify Potential Scope Items by Others		40	40	0%	12/13/2013	2/11/2014	2/11/2014	0													
577	IDB1150	Determine & Document Initial Baseline Scope		30	30	0%	2/12/2014	3/26/2014	3/26/2014	0													
578	IDB1160	Develop & Approve Initial Baseline Estimate (TPCE)		10	10	0%	3/27/2014	4/9/2014	10/31/2017	896													
579	IDB1170	Develop Initial Baseline Schedule		15	15	0%	5/22/2014	6/12/2014	10/24/2017	846													
580	IDB1180	Develop Initial Design Project Management Plan		5	5	0%	6/13/2014	6/19/2014	10/31/2017	846													
581	Final Design Project Baseline																						
582	FDB1000	Request Scoping Input		5	5	0%	12/6/2013	12/12/2013	11/13/2015	483													
583	FDB1010	Identify Potential Scope Items by Project Manager		40	40	0%	12/13/2013	2/11/2014	1/14/2016	483													
584	FDB1020	Identify Potential Scope Items by Planning		40	40	0%	12/13/2013	2/11/2014	1/14/2016	483													



█ Remaining Level of Effort
 █ Actual Work
 █ Critical Remaining Work
█ Actual Level of Effort
 █ Remaining Work
 ◆ Milestone

#	Activity ID	Activity Name	Owner	Original Duration	Remaining Duration	Physical % Complete	Early Start (A=Actual)	Early Finish (A=Actual)	Late Finish	Total Float	Gantt Chart											
											2013	2014	2015	2016	2017	2018	2019					
585	FDB1030	Identify Potential Scope Items by State Aid		40	40	0%	12/13/2013	2/11/2014	1/14/2016	483												
586	FDB1040	Identify Potential Scope Items by Land Management		40	40	0%	12/13/2013	2/11/2014	1/14/2016	483												
587	FDB1050	Identify Potential Scope Items by Surveys		40	40	0%	12/13/2013	2/11/2014	1/14/2016	483												
588	FDB1060	Identify Potential Scope Items by Environmental Coordinator		40	40	0%	12/13/2013	2/11/2014	1/14/2016	483												
589	FDB1070	Identify Potential Scope Items by Bridge		40	40	0%	12/13/2013	2/11/2014	1/14/2016	483												
590	FDB1080	Identify Potential Scope Items by Resident Office		40	40	0%	12/13/2013	2/11/2014	1/14/2016	483												
591	FDB1090	Identify Potential Scope Items by Design		40	40	0%	12/13/2013	2/11/2014	1/14/2016	483												
592	FDB1100	Identify Potential Scope Items by Hydraulics/Water Resources		40	40	0%	12/13/2013	2/11/2014	1/14/2016	483												
593	FDB1110	Identify Potential Scope Items by Maintenance		40	40	0%	12/13/2013	2/11/2014	1/14/2016	483												
594	FDB1120	Identify Potential Scope Items by Materials		40	40	0%	12/13/2013	2/11/2014	1/14/2016	483												
595	FDB1130	Identify Potential Scope Items by Traffic		40	40	0%	12/13/2013	2/11/2014	1/14/2016	483												
596	FDB1140	Identify Potential Scope Items by Others		40	40	0%	12/13/2013	2/11/2014	1/14/2016	483												
597	FDB1150	Determine & Document Final Baseline Scope		30	30	0%	2/12/2014	3/26/2014	2/29/2016	483												
598	FDB1160	Develop & Approve Final Baseline Estimate (TPCE)		10	10	0%	3/27/2014	4/9/2014	6/30/2017	811												
599	FDB1170	Develop Final Baseline Schedule		15	15	0%	4/10/2014	4/30/2014	10/24/2017	876												
600	FDB1180	Develop Final Design Project Management Plan		5	5	0%	5/1/2014	5/7/2014	10/31/2017	876												
601	Transportation Management Plan (TMP)																					
602	TMP1000	Prepare Transportation Management Plan (TMP)		7	7	0%	12/6/2013	12/16/2013	10/31/2017	974												
603	Ongoing Project Management																					
604	OPM1000	Perform Ongoing Project Management		906	906	0%	3/27/2014	10/31/2017	10/31/2017	0							Perform Ongoing Project					
605	Public Involvement																					
606	PUB1020	Perform Interest Group Coordination		906	906	0%	3/27/2014	10/31/2017	10/31/2017	0							Perform Interest Group C					
607	PUB1030	Perform Airport Coordination		906	906	0%	3/27/2014	10/31/2017	10/31/2017	0							Perform Airport Coordinat					
608	PUB1040	Perform Railroad Coordination		906	906	0%	3/27/2014	10/31/2017	10/31/2017	0							Perform Railroad Coordin					
609	PUB1050	Perform Transit Coordination		906	906	0%	3/27/2014	10/31/2017	10/31/2017	0							Perform Transit Coordinat					
610	PUB1060	Perform Emergency Services Coordination		906	906	0%	3/27/2014	10/31/2017	10/31/2017	0							Perform Emergency Serv					
611	PUB1070	Perform School Coordination		906	906	0%	3/27/2014	10/31/2017	10/31/2017	0							Perform School Coordinat					
612	PUB1080	Perform City Coordination		906	906	0%	3/27/2014	10/31/2017	10/31/2017	0							Perform City Coordination					
613	PUB1090	Perform County Coordination		906	906	0%	3/27/2014	10/31/2017	10/31/2017	0							Perform County Coordinat					
614	PUB1100	Perform DNR Coordination		906	906	0%	3/27/2014	10/31/2017	10/31/2017	0							Perform DNR Coordinatio					
615	PUB1110	Perform MPCA Coordination		906	906	0%	3/27/2014	10/31/2017	10/31/2017	0							Perform MPCA Coordinat					
616	PUB1120	Perform SHPO Coordination		906	906	0%	3/27/2014	10/31/2017	10/31/2017	0							Perform SHPO Coordinat					
617	PUB1130	Perform FHWA Coordination		906	906	0%	3/27/2014	10/31/2017	10/31/2017	0							Perform FHWA Coordinat					
618	PUB1140	Perform Tribal Coordination		906	906	0%	3/27/2014	10/31/2017	10/31/2017	0							Perform Tribal Coordinati					
619	PUB1150	Perform Major Projects Coordination		906	906	0%	3/27/2014	10/31/2017	10/31/2017	0							Perform Major Projects C					
620	PUB1000	Perform Resident Coordination		906	906	0%	3/27/2014	10/31/2017	10/31/2017	0							Perform Resident Coordin					
621	PUB1010	Perform Business Coordination		906	906	0%	3/27/2014	10/31/2017	10/31/2017	0							Perform Business Coord					
622	Environmental																					
623	Early Notification Memo																					
624	ENM1000	Prepare & Distribute ENM		10	10	0%	3/27/2014	4/9/2014	6/17/2015	299							Prepare & Distribute ENM					
625	ENM1030	Review & Respond to ENM for Regulated Waste		30	30	0%	4/10/2014	5/21/2014	10/3/2017	846							Review & Respond to ENM for Regulated Waste					
626	ENM1040	Review & Respond to ENM by DNR		30	30	0%	4/10/2014	5/21/2014	4/14/2017	727							Review & Respond to ENM by DNR					
627	ENM1050	Review & Respond to ENM by EMTU		30	30	0%	4/10/2014	5/21/2014	7/30/2015	299							Review & Respond to ENM by EMTU					
628	ENM1060	Review & Respond to ENM for T&ES		30	30	0%	4/10/2014	5/21/2014	10/3/2017	846							Review & Respond to ENM for T&ES					
629	ENM1070	Review & Respond to ENM for Vegetation		30	30	0%	4/10/2014	5/21/2014	10/3/2017	846							Review & Respond to ENM for Vegetation					
630	ENM1080	Review & Respond to ENM for Bike/Ped		30	30	0%	4/10/2014	5/21/2014	10/3/2017	846							Review & Respond to ENM for Bike/Ped					

█ Remaining Level of Effort
 █ Actual Work
 █ Critical Remaining Work
█ Actual Level of Effort
 █ Remaining Work
 ◆ Milestone

#	Activity ID	Activity Name	Owner	Original Duration	Remaining Duration	Physical % Complete	Early Start (A=Actual)	Early Finish (A=Actual)	Late Finish	Total Float	Timeline											
											2013	2014	2015	2016	2017	2018	2019					
631	ENM1090	Review & Respond to ENM for ADA		30	30	0%	4/10/2014	5/21/2014	1/14/2016	413												
632	ENM1100	Review & Respond to ENM by Aeronautics		30	30	0%	4/10/2014	5/21/2014	10/3/2017	846												
633	ENM1110	Review & Respond to ENM by Rail Office		30	30	0%	4/10/2014	5/21/2014	10/3/2017	846												
634	ENM1120	Review & Respond to ENM for Value Engineering		30	30	0%	4/10/2014	5/21/2014	10/3/2017	846												
635	ENM1020	Review & Respond to ENM by EIU		5	5	0%	4/10/2014	4/16/2014	10/3/2017	871												
636	ENM1010	Review & Respond to ENM by CRU		30	30	0%	4/10/2014	5/21/2014	10/3/2017	846												
637	ENM1130	Review & Respond to ENM by COE		5	5	0%	4/10/2014	4/16/2014	9/5/2017	851												
638	Environmental Studies																					
639	Cultural Resources																					
640	CRU1000	Conduct Preliminary CRU Evaluation		7	7	0%	4/10/2014	4/18/2014	11/3/2015	389												
641	CRU1010	Submit SHPO Notification		7	7	0%	4/21/2014	4/29/2014	11/13/2015	389												
642	CRU1030	Conduct Tribal Consultation		7	7	0%	4/21/2014	4/29/2014	9/29/2017	860												
643	CRU1020	Obtain SHPO Response To Notification		30	30	0%	4/30/2014	5/29/2014	12/15/2015	565												
644	CRU1050	Public Consultation for CRU Investigation		35	35	0%	4/30/2014	6/18/2014	1/6/2016	388												
645	CRU1090	Conduct Architectural History (Phase 2) Investigation		7	7	0%	6/30/2014	7/9/2014	1/27/2016	388												
646	CRU1100	Architectural History (Phase 2) Review		7	7	0%	7/10/2014	7/18/2014	2/5/2016	388												
647	CRU1060	Acquire Architectural History Consultant		7	7	0%	5/30/2014	6/9/2014	12/24/2015	388												
648	CRU1070	Conduct Architectural History (Phase 1) Investigation		7	7	0%	6/10/2014	6/18/2014	1/6/2016	388												
649	CRU1080	Architectural History (Phase 1) Review		7	7	0%	6/19/2014	6/27/2014	1/15/2016	388												
650	CRU1110	Acquire Historical Archeology Consultant		7	7	0%	5/30/2014	6/9/2014	12/24/2015	388												
651	CRU1120	Conduct Historical Archeology (Phase 1) Investigation		7	7	0%	6/10/2014	6/18/2014	1/6/2016	388												
652	CRU1130	Historical Archeology (Phase 1) Review		7	7	0%	6/19/2014	6/27/2014	1/15/2016	388												
653	CRU1140	Conduct Historical Archeology (Phase 2) Investigation		7	7	0%	6/30/2014	7/9/2014	1/27/2016	388												
654	CRU1150	Historical Archeology (Phase 2) Review		7	7	0%	7/10/2014	7/18/2014	2/5/2016	388												
655	CRU1160	Acquire Pre-Contact Archeology Consultant		7	7	0%	5/30/2014	6/9/2014	12/24/2015	388												
656	CRU1170	Conduct Pre-Contact Archeology (Phase 1) Investigation		7	7	0%	6/10/2014	6/18/2014	1/6/2016	388												
657	CRU1180	Pre-Contact Archeology (Phase 1) Review		7	7	0%	6/19/2014	6/27/2014	1/15/2016	388												
658	CRU1210	Acquire Geomorphology Consultant		7	7	0%	5/30/2014	6/9/2014	12/24/2015	388												
659	CRU1220	Conduct Geomorphology (Phase 1) Investigation		7	7	0%	6/10/2014	6/18/2014	1/6/2016	388												
660	CRU1230	Geomorphology (Phase 1) Review		7	7	0%	6/19/2014	6/27/2014	1/15/2016	388												
661	CRU1240	Conduct Pre-Contact Archeology (Phase 2) Investigation		7	7	0%	6/30/2014	7/9/2014	1/27/2016	388												
662	CRU1250	Pre-Contact Archeology (Phase 2) Review		7	7	0%	7/10/2014	7/18/2014	2/5/2016	388												
663	CRU1190	Conduct Geomorphology (Phase 2) Investigation		7	7	0%	6/30/2014	7/9/2014	1/27/2016	388												
664	CRU1200	Geomorphology (Phase 2) Review		7	7	0%	7/10/2014	7/18/2014	2/5/2016	388												
665	CRU1040	Obtain Tribal Response To Notification		30	30	0%	4/30/2014	5/29/2014	10/31/2017	1251												
666	CRU1260	Prepare Historic Property Determination		7	7	0%	7/21/2014	7/29/2014	2/17/2016	388												
667	CRU1270	Prepare Findings (No Historic Properties Affected)		7	7	0%	1/14/2015	1/26/2015	5/5/2016	323												
668	CRU1280	Prepare Findings (No Adverse Effects)		7	7	0%	1/14/2015	1/26/2015	4/5/2016	301												
669	CRU1290	Obtain SHPO Concurrence		30	30	0%	1/26/2015	2/25/2015	5/5/2016	436												
670	CRU1300	Prepare Findings (Adverse Effects)		7	7	0%	1/14/2015	1/26/2015	2/26/2016	274												
671	CRU1310	Obtain SHPO Concurrence		30	30	0%	1/26/2015	2/25/2015	3/27/2016	397												
672	CRU1320	Prepare Documentation of Adverse Effect		7	7	0%	2/25/2015	3/6/2015	4/5/2016	273												
673	CRU1330	Obtain ACHP Response		15	15	0%	3/6/2015	3/27/2015	4/26/2016	273												
674	CRU1340	Prepare MOA/PA		7	7	0%	3/27/2015	4/7/2015	5/5/2016	273												
675	CRU1350	Implement Mitigation		7	7	0%	5/30/2014	6/9/2014	10/31/2017	854												
676	Environmental Site Assessment																					
677	Environmental Due Diligence 1																					

█ Remaining Level of Effort
 █ Actual Work
 █ Critical Remaining Work
█ Actual Level of Effort
 █ Remaining Work
 ◆ Milestone

#	Activity ID	Activity Name	Owner	Original Duration	Remaining Duration	Physical % Complete	Early Start (A=Actual)	Early Finish (A=Actual)	Late Finish	Total Float	Timeline											
											2013	2014	2015	2016	2017	2018	2019					
678	EDD1000	Prepare EDD 1 by District & Submit to CO EIU		5	5	0%	3/27/2014	4/2/2014	4/2/2014	0												
679	EDD1010	Identify Known Contaminated Sites on Regulatory Website Review		5	5	0%	4/3/2014	4/9/2014	4/9/2014	0												
680	EDD1020	Request Files From Regulator		25	25	0%	4/10/2014	5/14/2014	5/14/2014	0												
681	EDD1030	Review Regulator Files/Summarize Findings/Respond to EDD1		10	10	0%	5/15/2014	5/29/2014	5/29/2014	0												
682	Environmental Due Diligence 2																					
683	EDD2000	Prepare EDD 2 by District & Submit to CO EIU		5	5	0%	5/30/2014	6/5/2014	6/5/2014	0												
684	EDD2010	CO EIU Review & Respond to EDD 2		7	7	0%	8/15/2017	8/23/2017	10/3/2017	28												
685	Environmental Due Diligence 3																					
686	EDD3030	EDD 3 Presentation to Deputy Commissioner		20	20	0%	12/23/2016	1/24/2017	9/26/2017	171												
687	EDD3040	Finalize EDD 3 with Deputy Commissioner Determination		5	5	0%	1/25/2017	1/31/2017	10/3/2017	171												
688	EDD3000	Prepare EDD 3 by District		5	5	0%	9/20/2016	9/26/2016	6/2/2017	171												
689	EDD3010	Update EDD 3 by CO EIU		40	40	0%	9/27/2016	11/22/2016	7/31/2017	171												
690	EDD3020	Obtain EDD 3 Signatures		20	20	0%	11/23/2016	12/22/2016	8/28/2017	171												
691	Environmental Site Assessment (Phase I & II)																					
692	ESA1000	Prepare Scope of Work/Obtain Cost Estimate to Hire Consultant fo		10	10	0%	6/6/2014	6/19/2014	6/19/2014	0												
693	ESA1010	Execute Contract		30	30	0%	6/20/2014	8/1/2014	8/1/2014	0												
694	ESA1040	Develop Work Plan For Drilling		10	10	0%	6/5/2015	6/18/2015	6/18/2015	0												
695	ESA1050	Obtain Right of Entries		60	60	0%	6/19/2015	9/14/2015	9/14/2015	0												
696	ESA1060	Complete Drilling & Discuss Field Findings With Consultant		180	180	0%	9/15/2015	6/2/2016	6/2/2016	0												
697	ESA1070	Receive, Review, and Tabulate Analytical Results		60	60	0%	6/3/2016	8/26/2016	8/26/2016	0												
698	ESA1080	Receive Results & Determine if Liability Protections are Required		10	10	0%	8/29/2016	9/12/2016	9/12/2016	0												
699	ESA1090	Make Updates to EDD I and Send to PM/RW		5	5	0%	9/13/2016	9/19/2016	9/19/2016	0												
700	ESA1100	Complete Draft Phase 2 Report		80	80	0%	9/20/2016	1/17/2017	1/17/2017	0												
701	ESA1110	Review & Finalize Phase 2 ESA		50	50	0%	1/18/2017	3/29/2017	3/29/2017	0												
702	ESA1020	Prepare Draft Phase I ESA		160	160	0%	8/4/2014	3/25/2015	3/25/2015	0												
703	ESA1030	Review & Finalize Phase I ESA		50	50	0%	3/26/2015	6/4/2015	6/4/2015	0												
704	ESA1120	Develop Work Plan For Drilling For Special Provisions		10	10	0%	6/5/2015	6/18/2015	4/18/2016	208												
705	ESA1130	Complete Drilling & Discuss Field Findings With Consultant For Sp		60	60	0%	6/19/2015	9/14/2015	7/13/2016	208												
706	ESA1140	Receive, Review, and Tabulate Analytical Results For Special Provi		40	40	0%	9/15/2015	11/9/2015	9/8/2016	208												
707	ESA1150	Complete Draft Phase 2 Report For Special Provisions		60	60	0%	11/10/2015	2/9/2016	12/6/2016	208												
708	ESA1160	Review & Finalize Phase 2 ESA For Special Provisions		50	50	0%	2/10/2016	4/20/2016	2/17/2017	208												
709	No Association Determination																					
710	NAD1010	Enter Regulatory Program		3	3	0%	5/25/2017	5/30/2017	7/10/2017	28												
711	NAD1020	Write NAD Requests		20	20	0%	5/31/2017	6/27/2017	8/7/2017	28												
712	NAD1030	Regulatory Review & Obtain Assurance Letter For Each Parcel		33	33	0%	6/28/2017	8/14/2017	9/22/2017	28												
713	NAD1000	Phase I ESA Update For NAD		40	40	0%	3/30/2017	5/24/2017	7/5/2017	28												
714	Response Action Plans																					
715	RAP1010	Prepare Response Action Plan		30	30	0%	4/21/2016	6/2/2016	4/3/2017	208												
716	RAP1020	Submit Response Action Plan to Regulator		30	30	0%	6/3/2016	7/15/2016	5/15/2017	208												
717	RAP1000	Phase I ESA Update For RAP		40	40	0%	11/10/2015	1/11/2016	2/17/2017	278												
718	Contaminated Materials Management Special Provisions																					
719	CSP1000	Review Data & Write Special Provisions		20	20	0%	3/30/2017	4/26/2017	4/26/2017	0												
720	CSP1010	District Review of Draft Provisions		10	10	0%	4/27/2017	5/10/2017	5/10/2017	0												
721	CSP1020	Finalize Special Provisions		3	3	0%	5/11/2017	5/15/2017	5/15/2017	0												
722	No Further Action Determination																					
723	NFA1000	Obtain No Further Action Letter for Each Parcel		30	30	0%	5/30/2014	7/11/2014	10/3/2017	811												
724	Regulated Waste																					
725	Regulated Waste Assessment																					

█ Remaining Level of Effort
 █ Actual Work
 █ Critical Remaining Work
█ Actual Level of Effort
 █ Remaining Work
 ◆ Milestone

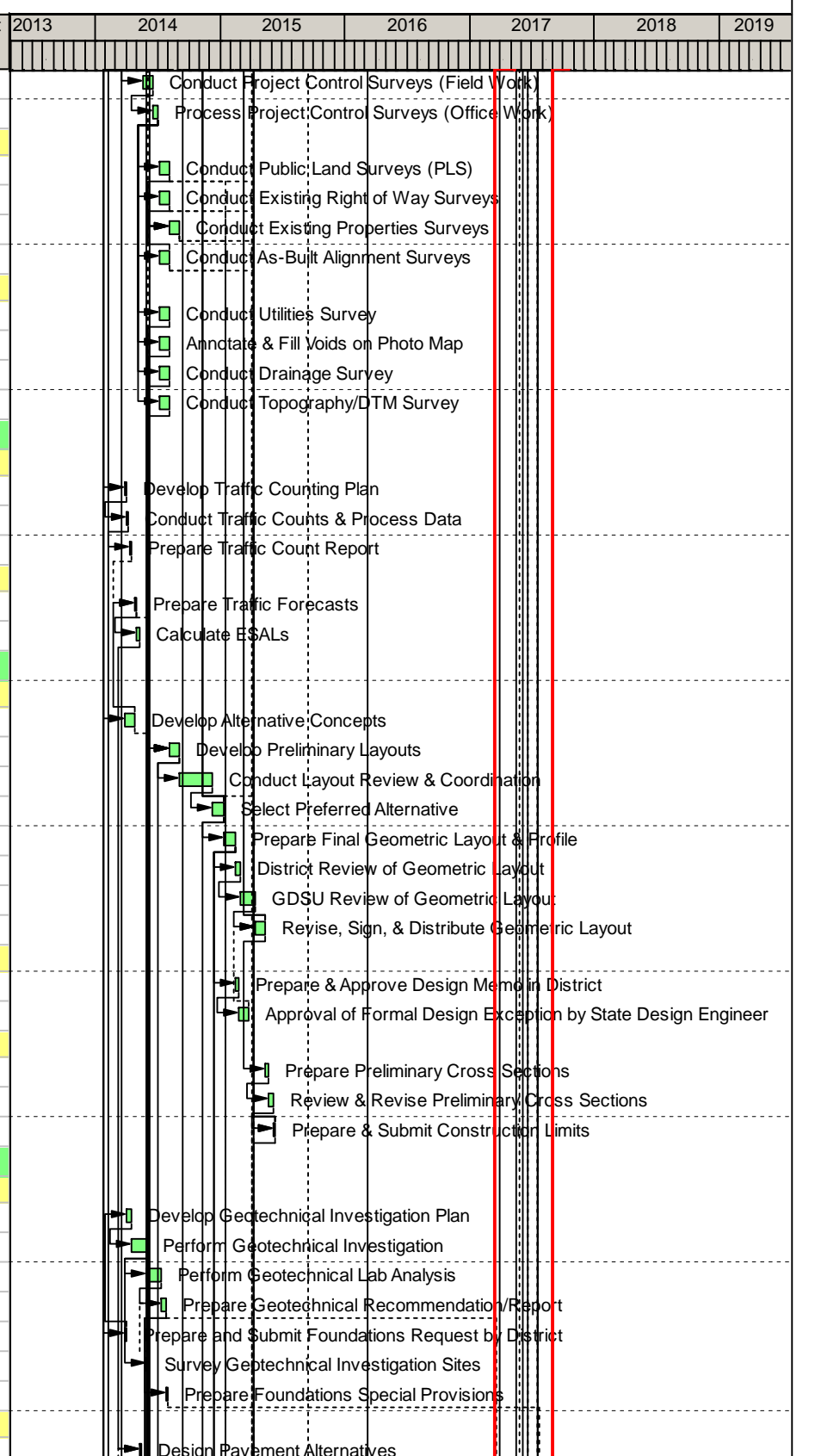
#	Activity ID	Activity Name	Owner	Original Duration	Remaining Duration	Physical % Complete	Early Start (A=Actual)	Early Finish (A=Actual)	Late Finish	Total Float	Gantt Chart											
											2013	2014	2015	2016	2017	2018	2019					
726	RGA1000	Procure Regulated Waste Assessment Consultant		5	5	0%	12/6/2013	12/12/2013	10/3/2017	956												
727	RGA1010	Conduct Regulated Waste Assessment		5	5	0%	12/13/2013	12/19/2013	10/10/2017	956												
728	RGA1020	Review Regulated Waste Assessment Findings & Determine Nest Actions		5	5	0%	12/20/2013	12/27/2013	10/17/2017	956												
729	RGA1030	Prepare Regulated Waste Special Provisions		5	5	0%	12/30/2013	1/6/2014	10/31/2017	961												
730	Regulated Waste Abatement																					
731	RGB1010	Conduct Regulated Waste Abatement		5	5	0%	1/7/2014	1/13/2014	10/31/2017	956												
732	RGB1000	Procure Regulated Waste Abatement Contractor		5	5	0%	12/30/2013	1/6/2014	10/24/2017	956												
733	Wetlands																					
734	WTL1000	Assess Existing Wetlands		5	5	0%	12/6/2013	12/12/2013	8/19/2016	675												
735	WTL1010	Delineate Wetlands (Level 1)		5	5	0%	12/13/2013	12/19/2013	10/17/2017	961												
736	WTL1030	Prepare Wetlands Report		5	5	0%	12/30/2013	1/6/2014	10/31/2017	961												
737	WTL1020	Delineate Wetlands (Level 2)		5	5	0%	12/20/2013	12/27/2013	10/24/2017	961												
738	Noise Analysis																					
739	NOI1010	Procure Prequalified Noise Analysis Consultant		60	60	0%	5/22/2014	8/15/2014	1/5/2016	346												
740	NOI1030	Conduct Noise Monitoring		10	10	0%	8/25/2014	9/8/2014	1/27/2016	346												
741	NOI1020	Develop/Approve Receptor Sites		5	5	0%	8/18/2014	8/22/2014	1/12/2016	346												
742	NOI1040	Conduct Noise Modeling for Preferred Alternative		5	5	0%	9/9/2014	9/15/2014	2/3/2016	346												
743	NOI1110	Prepare Draft Noise Report for Preferred Alternative		5	5	0%	9/16/2014	9/22/2014	2/10/2016	346												
744	NOI1120	Review Draft Noise Report for Preferred Alternative		15	15	0%	9/23/2014	10/13/2014	3/3/2016	346												
745	NOI1130	Revise Draft Noise Report for Preferred Alternative		15	15	0%	10/14/2014	11/3/2014	3/24/2016	346												
746	NOI1140	EMTU Review of Draft Noise Report for Preferred Alternative		15	15	0%	11/4/2014	11/25/2014	4/14/2016	346												
747	NOI1150	Prepare Final Noise Report for Preferred Alternative		15	15	0%	11/26/2014	12/18/2014	5/5/2016	346												
748	Air Quality Analysis																					
749	AIR1010	Procure Prequalified Air Quality Analysis Consultant		60	60	0%	5/22/2014	8/15/2014	10/23/2015	299												
750	AIR1020	Develop/Approve Receptor Sites		5	5	0%	8/18/2014	8/22/2014	10/30/2015	299												
751	AIR1030	Conduct Ambient Background Air Quality Monitoring		40	40	0%	8/25/2014	10/20/2014	12/31/2015	299												
752	AIR1040	Acquire Air Quality Analysis Modeling Input Data		22	22	0%	10/21/2014	11/20/2014	2/3/2016	299												
753	AIR1110	Prepare Draft Air Quality Report for Preferred Alternative		5	5	0%	11/21/2014	12/1/2014	2/10/2016	299												
754	AIR1120	Review Draft Air Quality Report for Preferred Alternative		15	15	0%	12/2/2014	12/22/2014	3/3/2016	299												
755	AIR1130	Revise Draft Air Quality Report for Preferred Alternative		15	15	0%	12/23/2014	1/14/2015	3/24/2016	299												
756	AIR1140	EMTU Review of Draft Air Quality Report for Preferred Alternative		15	15	0%	1/15/2015	2/5/2015	4/14/2016	299												
757	AIR1150	Prepare Final Air Quality Report for Preferred Alternative		15	15	0%	2/6/2015	2/27/2015	5/5/2016	299												
758	Environmental Document																					
759	Environmental Assessment (EA) / Environmental Assessment Worksheet (EAW)																					
760	EAW1140	Review of Final 4(f) Legal Sufficiency (Note: Only if there is a Full 4(f))		30	30	0%	3/11/2016	4/9/2016	3/15/2017	340												
761	EAW1170	Public Notice of FONSI & Negative Declaration		5	5	0%	5/2/2016	5/6/2016	4/12/2017	233												
762	EAW1000	Prepare EA/EAW Statement of Purpose & Need		7	7	0%	3/27/2014	4/4/2014	4/5/2016	502												
763	EAW1010	OES & FHWA Review of EA/EAW Statement of Purpose & Need		30	30	0%	4/5/2014	5/4/2014	5/5/2016	732												
764	EAW1020	Prepare EA/EAW Document		7	7	0%	6/5/2015	6/15/2015	5/16/2016	231												
765	EAW1030	OES EAU Review of EA/EAW Document		30	30	0%	6/16/2015	7/15/2015	6/15/2016	336												
766	EAW1040	Revise EA/EAW Document		7	7	0%	7/16/2015	7/24/2015	6/24/2016	231												
767	EAW1050	FHWA Review of EA/EAW Document		30	30	0%	7/25/2015	8/23/2015	7/24/2016	336												
768	EAW1060	DOI Review of EA/EAW 4(f) (Note: Only if there is a Full 4(f))		45	45	0%	8/24/2015	10/7/2015	9/7/2016	336												
769	EAW1070	Revise EA/EAW Document		7	7	0%	10/8/2015	10/16/2015	9/16/2016	230												
770	EAW1080	Obtain District, OES, FHWA Signatures for EA/EAW		15	15	0%	10/19/2015	11/6/2015	10/7/2016	230												
771	EAW1090	Public Comment Period for EA/EAW		45	45	0%	11/7/2015	12/21/2015	11/22/2016	337												
772	EAW1100	Prepare Findings of Fact & Conclusions		7	7	0%	12/22/2015	12/31/2015	12/5/2016	233												

■ Remaining Level of Effort
 ■ Actual Work
 ■ Critical Remaining Work
■ Actual Level of Effort
 ■ Remaining Work
 ◆ Milestone

#	Activity ID	Activity Name	Owner	Original Duration	Remaining Duration	Physical % Complete	Early Start (A=Actual)	Early Finish (A=Actual)	Late Finish	Total Float	2013	2014	2015	2016	2017	2018	2019
773	EAW1110	OES Review of Findings of Fact & Conclusions		30	30	0%	1/1/2016	1/30/2016	1/4/2017	340							
774	EAW1120	Revise Findings of Fact & Conclusions		7	7	0%	2/1/2016	2/9/2016	1/13/2017	234							
775	EAW1150	Request FONSI from FHWA		5	5	0%	4/11/2016	4/15/2016	3/22/2017	233							
776	EAW1160	Issuance of FONSI by FHWA		10	10	0%	4/18/2016	4/29/2016	4/5/2017	233							
777	EAW1130	FHWA Review of Findings of Fact & Conclusions		30	30	0%	2/10/2016	3/10/2016	2/13/2017	340							
778	Permits																
779	NPDES Stormwater Discharge Permit																
780	PNP1010	Staff Approved Layout Review by MPCA		30	30	0%	5/14/2015	6/13/2015	6/20/2017	739							
781	PNP1030	Prepare NPDES Permit Application		5	5	0%	5/31/2017	6/6/2017	7/27/2017	36							
782	PNP1020	60% Plan Review & Approval Letter by MPCA		30	30	0%	6/13/2015	7/13/2015	7/20/2017	739							
783	DNR Public Waters Permit																
784	DNR1010	Prepare & Submit DNR Public Waters Permit Application		5	5	0%	7/21/2014	7/25/2014	6/19/2017	727							
785	DNR1000	Coordinate Permitting Needs With DNR		40	40	0%	5/22/2014	7/18/2014	6/12/2017	727							
786	DNR1020	Public Waters Approval by DNR		65	65	0%	7/28/2014	10/27/2014	9/19/2017	727							
787	DNR1030	DNR Public Waters Permit Received		0	0	0%		10/27/2014	9/19/2017	727							
788	Wetlands Permit																
789	WTP1000	Conduct Pre-Application Meeting		5	5	0%	12/13/2013	12/19/2013	8/26/2016	675							
790	WTP1010	Prepare & Submit Combined Permit Application		10	10	0%	6/12/2015	6/26/2015	9/12/2016	304							
791	WTP1030	Respond to COE Draft Permit Questions		237	237	0%	6/26/2015	6/6/2016	8/21/2017	304							
792	WTP1040	401 Certification by MPCA		10	10	0%	6/7/2016	6/20/2016	9/5/2017	304							
793	WTP1050	404 Permit (Specify GP, LOP, SIP) Approval by COE		10	10	0%	6/21/2016	7/5/2016	9/19/2017	304							
794	WTP1020	Prepare WCA Approval		40	40	0%	6/26/2015	8/24/2015	9/19/2017	521							
795	WTP1060	Wetland Permit Received		0	0	0%		7/5/2016	9/19/2017	304							
796	Navigable Waters Permit																
797	NWP1000	Prepare & Submit Section 10 Permit Application		5	5	0%	4/17/2014	4/23/2014	9/12/2017	851							
798	NWP1010	Permit Approval by COE		5	5	0%	4/24/2014	4/30/2014	9/19/2017	851							
799	NWP1020	Section 10 (Navigable Waters) Permit Received		0	0	0%		4/30/2014	9/19/2017	851							
800	Watershed Permit																
801	WDP1000	Prepare & Submit Watershed District Permit Application		5	5	0%	6/12/2015	6/19/2015	8/18/2017	545							
802	WDP1010	Permit Approval by Watershed District		30	30	0%	6/19/2015	7/19/2015	9/19/2017	794							
803	WDP1020	Watershed District Permit Received		0	0	0%		7/20/2015	9/19/2017	546							
804	Road Design																
805	Surveys																
806	SUR1010	Submit Final Survey Request		5	5	0%	3/27/2014	4/2/2014	10/31/2017	901							
807	SUR1000	Submit Preliminary Survey Request		5	5	0%	3/27/2014	4/2/2014	10/31/2017	901							
808	Control Surveys																
809	Geodetic Control Surveys																
810	SGC1070	Submit Geodetic Control Survey Report to District		5	5	0%	5/14/2014	5/20/2014	6/3/2015	260							
811	SGC1080	Input Geodetic Control Survey into DB		1	1	0%	5/21/2014	5/21/2014	6/4/2015	260							
812	SGC1030	Initiate Gopher State 1 Call		2	2	0%	4/7/2014	4/8/2014	4/21/2015	260							
813	SGC1000	Request Geodetic Control Survey		1	1	0%	3/27/2014	3/27/2014	4/9/2015	260							
814	SGC1010	Build Project into DB		1	1	0%	3/28/2014	3/28/2014	4/10/2015	260							
815	SGC1020	Conduct Geodetic Control Survey Reconnaissance		5	5	0%	3/31/2014	4/4/2014	4/17/2015	260							
816	SGC1040	Perform Geodetic Control Survey Monumentation		5	5	0%	4/9/2014	4/15/2014	4/28/2015	260							
817	SGC1050	Conduct Geodetic Control Survey Field Observations		15	15	0%	4/16/2014	5/6/2014	5/19/2015	260							
818	SGC1060	Process Geodetic Control Survey Data		5	5	0%	5/7/2014	5/13/2014	5/27/2015	260							
819	Project Control Surveys																

■ Remaining Level of Effort
 ■ Actual Work
 ■ Critical Remaining Work
■ Actual Level of Effort
 ■ Remaining Work
 ◆ Milestone

#	Activity ID	Activity Name	Owner	Original Duration	Remaining Duration	Physical % Complete	Early Start (A=Actual)	Early Finish (A=Actual)	Late Finish	Total Float	Timeline											
											2013	2014	2015	2016	2017	2018	2019					
820	SPC1000	Conduct Project Control Surveys (Field Work)		20	20	0%	5/22/2014	6/19/2014	7/2/2015	260												
821	SPC1010	Process Project Control Surveys (Office Work)		10	10	0%	6/20/2014	7/3/2014	7/17/2015	260												
822	District Land Surveys																					
823	SDL1000	Conduct Public Land Surveys (PLS)		22	22	0%	7/7/2014	8/5/2014	7/19/2016	490												
824	SDL1010	Conduct Existing Right of Way Surveys		22	22	0%	7/7/2014	8/5/2014	7/19/2016	490												
825	SDL1030	Conduct Existing Properties Surveys		22	22	0%	8/6/2014	9/5/2014	8/18/2016	490												
826	SDL1020	Conduct As-Built Alignment Surveys		22	22	0%	7/7/2014	8/5/2014	7/19/2016	490												
827	Design Surveys																					
828	SDE1030	Conduct Utilities Survey		22	22	0%	7/7/2014	8/5/2014	3/7/2016	396												
829	SDE1000	Annotate & Fill Voids on Photo Map		22	22	0%	7/7/2014	8/5/2014	8/18/2015	260												
830	SDE1020	Conduct Drainage Survey		22	22	0%	7/7/2014	8/5/2014	3/7/2016	396												
831	SDE1010	Conduct Topography/DTM Survey		22	22	0%	7/7/2014	8/5/2014	8/18/2015	260												
832	Traffic Studies																					
833	Traffic Counts																					
834	TRC1000	Develop Traffic Counting Plan		5	5	0%	3/27/2014	4/2/2014	7/28/2015	332												
835	TRC1010	Conduct Traffic Counts & Process Data		5	5	0%	4/3/2014	4/9/2014	8/4/2015	332												
836	TRC1020	Prepare Traffic Count Report		5	5	0%	4/10/2014	4/16/2014	8/11/2015	332												
837	Traffic Forecasts																					
838	TRF1000	Prepare Traffic Forecasts		5	5	0%	4/25/2014	5/2/2014	8/18/2015	325												
839	TRF1010	Calculate ESALs		5	5	0%	5/2/2014	5/9/2014	3/7/2016	457												
840	Preliminary Design																					
841	Staff Approved Layout																					
842	LAY1000	Develop Alternative Concepts		22	22	0%	3/27/2014	4/25/2014	8/11/2015	325												
843	LAY1010	Develop Preliminary Layouts		22	22	0%	8/6/2014	9/5/2014	9/17/2015	260												
844	LAY1020	Conduct Layout Review & Coordination		66	66	0%	9/5/2014	12/11/2014	12/23/2015	260												
845	LAY1030	Select Preferred Alternative		22	22	0%	12/11/2014	1/14/2015	1/27/2016	260												
846	LAY1040	Prepare Final Geometric Layout & Profile		22	22	0%	1/14/2015	2/17/2015	2/29/2016	260												
847	LAY1050	District Review of Geometric Layout		10	10	0%	2/17/2015	3/3/2015	5/6/2016	298												
848	LAY1060	GDSU Review of Geometric Layout		30	30	0%	3/3/2015	4/14/2015	6/20/2016	298												
849	LAY1070	Revise, Sign, & Distribute Geometric Layout		22	22	0%	4/14/2015	5/14/2015	7/21/2016	298												
850	Design Memo/Design Exception																					
851	DME1000	Prepare & Approve Design Memo in District		5	5	0%	2/17/2015	2/24/2015	5/20/2016	313												
852	DME1010	Approval of Formal Design Exception by State Design Engineer		20	20	0%	2/24/2015	3/24/2015	6/20/2016	313												
853	RW Construction Limits																					
854	LIM1000	Prepare Preliminary Cross Sections		5	5	0%	5/14/2015	5/21/2015	7/28/2016	298												
855	LIM1010	Review & Revise Preliminary Cross Sections		10	10	0%	5/21/2015	6/5/2015	8/11/2016	298												
856	LIM1020	Prepare & Submit Construction Limits		5	5	0%	6/5/2015	6/12/2015	8/18/2016	298												
857	Recommendations																					
858	Foundations Recommendations - Roadway																					
859	GEO1010	Develop Geotechnical Investigation Plan		10	10	0%	4/3/2014	4/16/2014	2/3/2017	703												
860	GEO1020	Perform Geotechnical Investigation		30	30	0%	4/17/2014	5/29/2014	3/20/2017	703												
861	GEO1040	Perform Geotechnical Lab Analysis		30	30	0%	5/30/2014	7/11/2014	5/1/2017	703												
862	GEO1050	Prepare Geotechnical Recommendation/Report		10	10	0%	7/14/2014	7/25/2014	5/15/2017	703												
863	GEO1000	Prepare and Submit Foundations Request by District		5	5	0%	3/27/2014	4/2/2014	1/20/2017	703												
864	GEO1030	Survey Geotechnical Investigation Sites		5	5	0%	5/30/2014	6/5/2014	5/1/2017	728												
865	GEO1060	Prepare Foundations Special Provisions		5	5	0%	7/28/2014	8/1/2014	5/22/2017	703												
866	Material Design Recommendation (MDR)																					
867	MDR1010	Design Pavement Alternatives		5	5	0%	5/9/2014	5/16/2014	3/14/2016	457												



■ Remaining Level of Effort
 ■ Actual Work
 ■ Critical Remaining Work
■ Actual Level of Effort
 ■ Remaining Work
 ◆ Milestone

#	Activity ID	Activity Name	Owner	Original Duration	Remaining Duration	Physical % Complete	Early Start (A=Actual)	Early Finish (A=Actual)	Late Finish	Total Float	Gantt Chart											
											2013	2014	2015	2016	2017	2018	2019					
868	MDR1000	Conduct Borings		5	5	0%	3/27/2014	4/2/2014	3/7/2016	483												
869	MDR1020	Prepare LCCA		5	5	0%	5/16/2014	5/23/2014	6/28/2017	778												
870	MDR1030	Maplewood Review of LCCA		5	5	0%	5/23/2014	6/2/2014	7/6/2017	778												
871	MDR1040	Industry Review of LCCA		5	5	0%	6/2/2014	6/9/2014	7/13/2017	778												
872	MDR1050	Revise Pavement Design		5	5	0%	6/9/2014	6/16/2014	7/20/2017	778												
873	MDR1060	Prepare MDR		5	5	0%	7/28/2014	8/1/2014	7/27/2017	749												
874	Hydraulics Design Recommendations																					
875	Stormwater Treatment Design																					
876	PND1010	Determine Pond Size & Location		5	5	0%	12/13/2013	12/19/2013	10/17/2017	961												
877	PND1030	Design Pond Contours, Drainage Structures, & Seeding		5	5	0%	12/30/2013	1/6/2014	10/31/2017	961												
878	PND1000	Request Soil Borings/Piezometers		5	5	0%	12/6/2013	12/12/2013	10/10/2017	961												
879	PND1020	Develop Staging for Drainage		5	5	0%	12/20/2013	12/27/2013	10/24/2017	961												
880	Culvert Design																					
881	CUL1000	Determine Drainage Areas & Flows for Culverts		5	5	0%	1/14/2015	1/22/2015	3/7/2016	282												
882	CUL1010	Determine Culvert Size & Flow Lines		5	5	0%	1/22/2015	1/29/2015	3/14/2016	282												
883	Storm Sewer Design																					
884	STO1000	Determine Drainage Areas & Flows for Storm Sewers		5	5	0%	2/17/2015	2/24/2015	3/7/2016	260												
885	STO1010	Determine Storm Sewer Size & Flow Lines		5	5	0%	2/24/2015	3/3/2015	3/14/2016	260												
886	Drain Tile Design																					
887	DRA1000	Collect Drain Tile Maps		5	5	0%	9/5/2014	9/12/2014	3/7/2016	370												
888	DRA1010	Conduct Drain Tile Meetings with Farm Owners/Operators		5	5	0%	9/12/2014	9/19/2014	3/14/2016	370												
889	DRA1020	Determine Drain Tile Size & Flow Lines		5	5	0%	9/19/2014	9/26/2014	3/21/2016	370												
890	ADA Recommendations																					
891	ADA Recommendations																					
892	ADA1000	Conduct ADA Field Walk		15	15	0%	5/22/2014	6/12/2014	2/5/2016	413												
893	ADA1010	Prepare Draft ADA Field Walk Recommendations		5	5	0%	6/13/2014	6/19/2014	2/12/2016	413												
894	ADA1020	District Review of ADA Field Walk Recommendations		10	10	0%	6/20/2014	7/3/2014	2/29/2016	413												
895	ADA1030	Finalize ADA Field Walk Recommendations		5	5	0%	7/7/2014	7/11/2014	3/7/2016	413												
896	Final Design																					
897	Plan Set																					
898	Road Plans																					
899	30% Plans																					
900	PLN3010	Prepare Title Page		5	5	0%	3/27/2014	4/2/2014	3/14/2016	488												
901	PLN3020	Prepare General Layout		5	5	0%	3/27/2014	4/2/2014	3/14/2016	488												
902	PLN3030	Prepare Typical Sections		5	5	0%	3/27/2014	4/2/2014	3/14/2016	488												
903	PLN3040	Prepare Inplace Topography Sheets		5	5	0%	3/27/2014	4/2/2014	3/14/2016	488												
904	PLN3050	Prepare Construction Plan Sheets		5	5	0%	8/6/2014	8/12/2014	3/14/2016	396												
905	PLN3060	Prepare Profile Sheets		5	5	0%	3/27/2014	4/2/2014	3/14/2016	488												
906	PLN3500	Conduct 30% Plan Functional Group Review		5	5	0%	8/13/2014	8/19/2014	3/21/2016	396												
907	60% Plans																					
908	PLN6010	Prepare Earthwork Tab & Summary		5	5	0%	8/20/2014	8/26/2014	3/28/2016	396												
909	PLN6020	Prepare Soils & Construction Notes		5	5	0%	8/13/2014	8/19/2014	3/28/2016	401												
910	PLN6030	Prepare Tabulated Quantities		5	5	0%	3/10/2015	3/17/2015	3/28/2016	260												
911	PLN6050	Prepare Special Environmental Plan		5	5	0%	8/13/2014	8/19/2014	3/28/2016	401												
912	PLN6060	Prepare Alignment Plan & Tabs		5	5	0%	8/13/2014	8/19/2014	3/28/2016	401												
913	PLN6070	Prepare Removal Plans		5	5	0%	8/13/2014	8/19/2014	3/21/2016	396												
914	PLN6100	Prepare Erosion Control Plan		5	5	0%	3/3/2015	3/10/2015	3/21/2016	260												
915	PLN6110	Prepare Traffic Barrier Plan		5	5	0%	8/13/2014	8/19/2014	3/21/2016	396												

█ Remaining Level of Effort
 █ Actual Work
 █ Critical Remaining Work
█ Actual Level of Effort
 █ Remaining Work
 ◆ Milestone

#	Activity ID	Activity Name	Owner	Original Duration	Remaining Duration	Physical % Complete	Early Start (A=Actual)	Early Finish (A=Actual)	Late Finish	Total Float	2013	2014	2015	2016	2017	2018	2019
916	PLN6120	Prepare Cross Sections & Cross Section Matchline Layout		5	5	0%	8/13/2014	8/19/2014	3/21/2016	396							
917	PLN6040	Prepare Utility Tabs		5	5	0%	8/13/2014	8/19/2014	3/28/2016	401							
918	PLN6080	Prepare Drainage Plans Profiles & Tabs		5	5	0%	3/3/2015	3/10/2015	3/28/2016	265							
919	PLN6090	Prepare Stormwater Pollution Prevention Plan (SWPPP) & Water R		5	5	0%	3/10/2015	3/17/2015	3/28/2016	260							
920	PLN6500	Conduct 60% Plan Functional Group Review		5	5	0%	3/17/2015	3/24/2015	4/4/2016	260							
921	90% Plans																
922	PLN9010	Prepare Statement of Estimated Quantities		5	5	0%	3/24/2015	3/31/2015	5/22/2017	540							
923	PLN9020	List Standard Plates		5	5	0%	3/17/2015	3/24/2015	5/22/2017	545							
924	PLN9030	Develop Details		5	5	0%	3/17/2015	3/24/2015	5/22/2017	545							
925	PLN9040	Incorporate Standard Plans		5	5	0%	3/17/2015	3/24/2015	5/22/2017	545							
926	PLN9060	Develop Pedestrian Accommodation Details		5	5	0%	3/17/2015	3/24/2015	5/22/2017	545							
927	PLN9070	Prepare Concrete Paving Plan & Details		5	5	0%	3/17/2015	3/24/2015	5/22/2017	545							
928	PLN9080	Prepare Bituminous Paving Plan & Details		5	5	0%	3/17/2015	3/24/2015	5/22/2017	545							
929	PLN9050	Develop Intersection Details		5	5	0%	3/17/2015	3/24/2015	5/22/2017	545							
930	PLN9090	Prepare Superelevation Plans		5	5	0%	3/17/2015	3/24/2015	5/22/2017	545							
931	PLN9100	Develop Drainage Details		5	5	0%	3/17/2015	3/24/2015	5/22/2017	545							
932	PLN9110	Prepare Turf Establishment Plans		5	5	0%	3/17/2015	3/24/2015	5/15/2017	540							
933	PLN9120	Prepare Impact Attenuator Plan & Details		5	5	0%	3/17/2015	3/24/2015	5/15/2017	540							
934	PLN9130	Develop Traffic Barrier Details		5	5	0%	3/17/2015	3/24/2015	5/22/2017	545							
935	PLN9140	Prepare Fencing Plans		5	5	0%	3/17/2015	3/24/2015	5/15/2017	540							
936	PLN9150	Prepare Temporary Pedestrian Access Route		5	5	0%	3/17/2015	3/24/2015	5/22/2017	545							
937	PLN9170	Assemble 90% Plan		5	5	0%	5/23/2017	5/30/2017	5/30/2017	0							
938	PLN9160	Prepare Special Provisions		5	5	0%	5/16/2017	5/22/2017	5/22/2017	0							
939	Project Turn In																
940	TUR1000	District Review of Final Plan		20	20	0%	5/31/2017	6/27/2017	6/27/2017	0							
941	TUR1010	Revise Final Plan		7	7	0%	6/28/2017	7/7/2017	7/7/2017	0							
942	TUR1020	Conduct 100% Quality Control Check Process by District		7	7	0%	7/10/2017	7/18/2017	7/18/2017	0							
943	TUR1040	Prepare Submittal Memo and Submit Plans & Specs		7	7	0%	7/28/2017	8/7/2017	8/7/2017	0							
944	TUR1030	Prepare Final Construction Cost Estimate by District		7	7	0%	7/19/2017	7/27/2017	7/27/2017	0							
945	Utilities																
946	Utility Coordination																
947	UTC1010	Conduct Utility Design Meeting		15	15	0%	9/4/2014	9/24/2014	7/27/2017	712							
948	UTC1020	Obtain & Review Utility Relocation Plans		15	15	0%	9/25/2014	10/15/2014	8/17/2017	712							
949	UTC1030	Prepare & Send Utility Verification Letters		2	2	0%	10/16/2014	10/17/2014	10/31/2017	762							
950	UTC1070	Prepare & Send Utility Notice & Orders		1	1	0%	11/14/2014	11/14/2014	9/19/2017	713							
951	UTC1050	District Review of Utility Permit Application		10	10	0%	10/16/2014	10/29/2014	9/1/2017	713							
952	UTC1060	Prepare & Approve Utility Permit by CO Utilities Unit		10	10	0%	10/30/2014	11/13/2014	9/18/2017	713							
953	UTC1040	Utility Permit Application Prepared by Utility Company		15	15	0%	9/25/2014	10/15/2014	8/18/2017	713							
954	UTC1000	Send Plan Information & Conduct Utility Information Meetings		15	15	0%	8/13/2014	9/3/2014	7/6/2017	712							
955	Right of Way																
956	Title Opinion																
957	RTO1010	Prepare Title Opinions		20	20	0%	2/20/2015	3/20/2015	9/16/2016	377							
958	RTO1000	Title Map		3	3	0%	2/17/2015	2/20/2015	8/18/2016	377							
959	RTO1020	Unrecorded Utilities Easements		20	20	0%	2/20/2015	3/20/2015	9/16/2016	377							
960	Right of Way Package																
961	RWP1000	Authorization Map		20	20	0%	3/20/2015	4/17/2015	10/14/2016	377							
962	RWP1030	Market Data		5	5	0%	8/10/2015	8/17/2015	2/2/2017	366							

■ Remaining Level of Effort
 ■ Actual Work
 ■ Critical Remaining Work
■ Actual Level of Effort
 ■ Remaining Work
◆ Milestone

#	Activity ID	Activity Name	Owner	Original Duration	Remaining Duration	Physical % Complete	Early Start (A=Actual)	Early Finish (A=Actual)	Late Finish	Total Float	Timeline											
											2013	2014	2015	2016	2017	2018	2019					
963	RWP1040	Parcel Sketches		20	20	0%	8/10/2015	9/8/2015	12/7/2016	313												
964	RWP1050	Field Titles		20	20	0%	8/10/2015	9/8/2015	12/7/2016	313												
965	RWP1060	Write Legal Descriptions		7	7	0%	9/29/2015	10/8/2015	12/16/2016	298												
966	RWP1070	Prepare Right of Way Packages		3	3	0%	10/8/2015	10/13/2015	2/7/2017	329												
967	RWP1010	Work Map		40	40	0%	6/12/2015	8/10/2015	10/14/2016	298												
968	RWP1020	Prepare Plats		35	35	0%	8/10/2015	9/29/2015	12/7/2016	298												
969	Valuations																					
970	RVL1000	Procure Valuation Consultant		30	30	0%	2/17/2015	3/31/2015	12/7/2016	425												
971	RVL1010	Complete Valuations		65	65	0%	9/29/2015	1/5/2016	3/14/2017	298												
972	RVL1020	Review & Certify Valuations		15	15	0%	1/5/2016	1/27/2016	4/4/2017	298												
973	Right of Way Pre-Acquisition																					
974	RPA1000	Right of Way Receive and Distribute		2	2	0%	10/13/2015	10/15/2015	2/9/2017	329												
975	RPA1010	Review and Approve Legal Descriptions		5	5	0%	10/15/2015	10/22/2015	3/24/2017	354												
976	RPA1020	Review and Approve Plats		20	20	0%	10/15/2015	11/13/2015	3/10/2017	329												
977	RPA1030	File Plats		2	2	0%	11/13/2015	11/17/2015	3/14/2017	329												
978	RPA1040	Attorney's Condition of Title		5	5	0%	10/15/2015	10/22/2015	3/24/2017	354												
979	RPA1050	Conveyance Documents		10	10	0%	11/13/2015	12/1/2015	4/7/2017	339												
980	RPA1060	Commissioner's Orders		5	5	0%	11/20/2015	12/1/2015	4/7/2017	339												
981	RPA1070	Encumber Funds		3	3	0%	1/27/2016	2/1/2016	4/7/2017	298												
982	RPA1080	Direct Purchase Documents		3	3	0%	2/1/2016	2/4/2016	4/12/2017	298												
983	Direct Purchase																					
984	RDP1000	Direct Purchase Offer		10	10	0%	5/9/2016	5/20/2016	4/26/2017	233												
985	RDP1010	Direct Purchase Negotiation		22	22	0%	5/9/2016	6/8/2016	9/26/2017	328												
986	RDP1020	Administrative Settlement		5	5	0%	6/8/2016	6/15/2016	10/3/2017	328												
987	RDP1030	Purchase		5	5	0%	8/24/2017	8/30/2017	10/10/2017	28												
988	RDP1040	State Acceptance Date		0	0	0%		8/30/2017	10/10/2017	28												
989	RDP1050	Closing Package		10	10	0%	8/31/2017	9/14/2017	10/24/2017	28												
990	RDP1060	Direct Purchase Final Payment		5	5	0%	9/15/2017	9/21/2017	10/31/2017	28												
991	Condemnation																					
992	RCD1010	Call Back Memo		2	2	0%	6/22/2016	6/24/2016	5/30/2017	233												
993	RCD1020	Assemble Condemnation Package		7	7	0%	6/24/2016	7/6/2016	6/8/2017	233												
994	RCD1030	Supplement Condemnation Package		7	7	0%	7/6/2016	7/15/2016	6/22/2017	236												
995	RCD1040	Update Titles Opinion		10	10	0%	7/6/2016	7/20/2016	6/22/2017	233												
996	RCD1050	Identify Affected Commissioner's Orders		2	2	0%	7/20/2016	7/22/2016	6/26/2017	233												
997	RCD1060	Investigate/Update ACOT		4	4	0%	7/22/2016	7/28/2016	6/30/2017	233												
998	RCD1070	Draft Petition		4	4	0%	7/28/2016	8/3/2016	7/7/2017	233												
999	RCD1080	Request Condemnation Acton		3	3	0%	8/3/2016	8/8/2016	7/12/2017	233												
1000	RCD1090	Obtain Hearing Date		10	10	0%	8/8/2016	8/22/2016	7/26/2017	233												
1001	RCD1100	Prepare Condemnation Notice		15	15	0%	8/8/2016	8/29/2016	8/2/2017	233												
1002	RCD1110	Serve Condemnation Notice		22	22	0%	8/29/2016	9/29/2016	9/1/2017	233												
1003	RCD1130	Prehearing Meeting		0	0	0%		9/29/2016	9/8/2017	237												
1004	RCD1140	File Proof of Service		2	2	0%	9/29/2016	10/3/2016	9/12/2017	237												
1005	RCD1150	Hearing on Petition		10	10	0%	10/3/2016	10/17/2016	9/26/2017	237												
1006	RCD1170	Judge Signs Court Order		5	5	0%	10/17/2016	10/24/2016	10/10/2017	242												
1007	RCD1180	AG Request Quick Take Payment		5	5	0%	10/24/2016	10/31/2016	10/17/2017	242												
1008	RCD1190	Process & Make Payment		5	5	0%	10/31/2016	11/7/2016	10/24/2017	242												
1009	RCD1200	Quick Take Notice Period		5	5	0%	11/7/2016	11/15/2016	10/31/2017	242												

█ Remaining Level of Effort
 █ Actual Work
 █ Critical Remaining Work
█ Actual Level of Effort
 █ Remaining Work
 ◆ Milestone

#	Activity ID	Activity Name	Owner	Original Duration	Remaining Duration	Physical % Complete	Early Start (A=Actual)	Early Finish (A=Actual)	Late Finish	Total Float	Gantt Chart (2013-2019)											
											2013	2014	2015	2016	2017	2018	2019					
1010	RCD1210	Title & Possession		0	0	0%		9/21/2017	10/31/2017	28	[Gantt bar for 1010: Title & Possession, 9/21/2017 to 10/31/2017]											
1011	RCD1000	Good Faith Negotiation Period		22	22	0%	5/23/2016	6/22/2016	5/25/2017	233	[Gantt bar for 1011: Good Faith Negotiation Period, 5/23/2016 to 6/22/2016]											
1012	RCD1160	35 Day Waiting Period for Title and Possession		35	35	0%	10/17/2016	11/21/2016	10/31/2017	345	[Gantt bar for 1012: 35 Day Waiting Period for Title and Possession, 10/17/2016 to 11/21/2016]											
1013	RCD1120	90 Day Quick Take Period		90	90	0%	8/29/2016	11/27/2016	10/31/2017	339	[Gantt bar for 1013: 90 Day Quick Take Period, 8/29/2016 to 11/27/2016]											
1014	Agreements																					
1015	Utility Agreements																					
1016	AUT1000	Prepare & Submit Draft Utility Agreement		2	2	0%	10/16/2014	10/17/2014	8/21/2017	712	[Gantt bar for 1016: Prepare & Submit Draft Utility Agreement, 10/16/2014 to 10/17/2014]											
1017	AUT1010	Negotiate Utility Agreement & Submit for Approval		20	20	0%	10/20/2014	11/17/2014	9/19/2017	712	[Gantt bar for 1017: Negotiate Utility Agreement & Submit for Approval, 10/20/2014 to 11/17/2014]											
1018	AUT1020	Obtain Approval of Utility Agreement		30	30	0%	11/18/2014	1/2/2015	10/31/2017	712	[Gantt bar for 1018: Obtain Approval of Utility Agreement, 11/18/2014 to 1/2/2015]											
1019	Cooperative Construction Agreements																					
1020	ACC1020	Prepare Draft Cooperative Construction Agreement		15	15	0%	5/15/2014	6/5/2014	8/28/2017	811	[Gantt bar for 1020: Prepare Draft Cooperative Construction Agreement, 5/15/2014 to 6/5/2014]											
1021	ACC1040	Obtain Resolution on Cooperative Construction Agreement from LGU		25	25	0%	7/7/2014	8/8/2014	10/31/2017	811	[Gantt bar for 1021: Obtain Resolution on Cooperative Construction Agreement from LGU, 7/7/2014 to 8/8/2014]											
1022	ACC1050	Cooperative Construction Agreement Signed		0	0	0%		8/8/2014	10/31/2017	811	[Gantt bar for 1022: Cooperative Construction Agreement Signed, 8/8/2014 to 10/31/2017]											
1023	ACC1000	Discuss Cost Participation with LGU		20	20	0%	4/10/2014	5/7/2014	7/31/2017	811	[Gantt bar for 1023: Discuss Cost Participation with LGU, 4/10/2014 to 5/7/2014]											
1024	ACC1010	Prepare & Submit Cooperative Agreement Request		5	5	0%	5/8/2014	5/14/2014	8/7/2017	811	[Gantt bar for 1024: Prepare & Submit Cooperative Agreement Request, 5/8/2014 to 5/14/2014]											
1025	ACC1030	Negotiate Cooperative Construction Agreement with LGU & Submit		20	20	0%	6/6/2014	7/3/2014	9/26/2017	811	[Gantt bar for 1025: Negotiate Cooperative Construction Agreement with LGU & Submit, 6/6/2014 to 7/3/2014]											
1026	Letting																					
1027	Complex Process B																					
1028	Plans & Special Provisions																					
1029	PSP1000	Determine Permit Requirements by OLM		20	20	0%	8/8/2017	9/5/2017	9/5/2017	0	[Gantt bar for 1029: Determine Permit Requirements by OLM, 8/8/2017 to 9/5/2017]											
1030	PSP1010	OTST Review of Signing Special Provisions		20	20	0%	8/8/2017	9/5/2017	9/5/2017	0	[Gantt bar for 1030: OTST Review of Signing Special Provisions, 8/8/2017 to 9/5/2017]											
1031	PSP1020	OTST Review of Lighting Special Provisions		20	20	0%	8/8/2017	9/5/2017	9/5/2017	0	[Gantt bar for 1031: OTST Review of Lighting Special Provisions, 8/8/2017 to 9/5/2017]											
1032	PSP1030	OTST Review of Signal Special Provisions		20	20	0%	8/8/2017	9/5/2017	9/5/2017	0	[Gantt bar for 1032: OTST Review of Signal Special Provisions, 8/8/2017 to 9/5/2017]											
1033	PSP1040	Obtain Right of Way Authorization by OLM		20	20	0%	8/8/2017	9/5/2017	9/5/2017	0	[Gantt bar for 1033: Obtain Right of Way Authorization by OLM, 8/8/2017 to 9/5/2017]											
1034	PSP1050	Bridge Office Review of Bridge Plans & Special Provisions		20	20	0%	8/8/2017	9/5/2017	9/5/2017	0	[Gantt bar for 1034: Bridge Office Review of Bridge Plans & Special Provisions, 8/8/2017 to 9/5/2017]											
1035	PSP1060	Assemble Special Provisions & Prepare /Proposal		20	20	0%	8/8/2017	9/5/2017	9/5/2017	0	[Gantt bar for 1035: Assemble Special Provisions & Prepare /Proposal, 8/8/2017 to 9/5/2017]											
1036	PSP1070	Conduct CO Plan Review & Revisions		20	20	0%	8/8/2017	9/5/2017	9/5/2017	0	[Gantt bar for 1036: Conduct CO Plan Review & Revisions, 8/8/2017 to 9/5/2017]											
1037	PSP1080	Obtain Environmental Approvals by OES		20	20	0%	8/8/2017	9/5/2017	9/5/2017	0	[Gantt bar for 1037: Obtain Environmental Approvals by OES, 8/8/2017 to 9/5/2017]											
1038	Estimating																					
1039	EST1000	Prepare Engineer's Estimate		20	20	0%	8/8/2017	9/5/2017	9/5/2017	0	[Gantt bar for 1039: Prepare Engineer's Estimate, 8/8/2017 to 9/5/2017]											
1040	EST1010	Develop TGB/DBE Goals by EEO		20	20	0%	8/8/2017	9/5/2017	9/5/2017	0	[Gantt bar for 1040: Develop TGB/DBE Goals by EEO, 8/8/2017 to 9/5/2017]											
1041	EST1020	Enter Project Into TRANS*PORT		20	20	0%	8/8/2017	9/5/2017	9/5/2017	0	[Gantt bar for 1041: Enter Project Into TRANS*PORT, 8/8/2017 to 9/5/2017]											
1042	Letting																					
1043	LET1000	Print Plan and Proposal		5	5	0%	9/6/2017	9/12/2017	9/12/2017	0	[Gantt bar for 1043: Print Plan and Proposal, 9/6/2017 to 9/12/2017]											
1044	LET1010	FHWA Authorization		5	5	0%	9/13/2017	9/19/2017	9/19/2017	0	[Gantt bar for 1044: FHWA Authorization, 9/13/2017 to 9/19/2017]											
1045	LET1020	Advertise Project		5	5	0%	9/20/2017	9/26/2017	9/26/2017	0	[Gantt bar for 1045: Advertise Project, 9/20/2017 to 9/26/2017]											
1046	LET1030	Contractor Bidding Period		25	25	0%	9/27/2017	10/31/2017	10/31/2017	0	[Gantt bar for 1046: Contractor Bidding Period, 9/27/2017 to 10/31/2017]											

█ Remaining Level of Effort
 █ Actual Work
 █ Critical Remaining Work
█ Actual Level of Effort
 █ Remaining Work
 ◆ Milestone